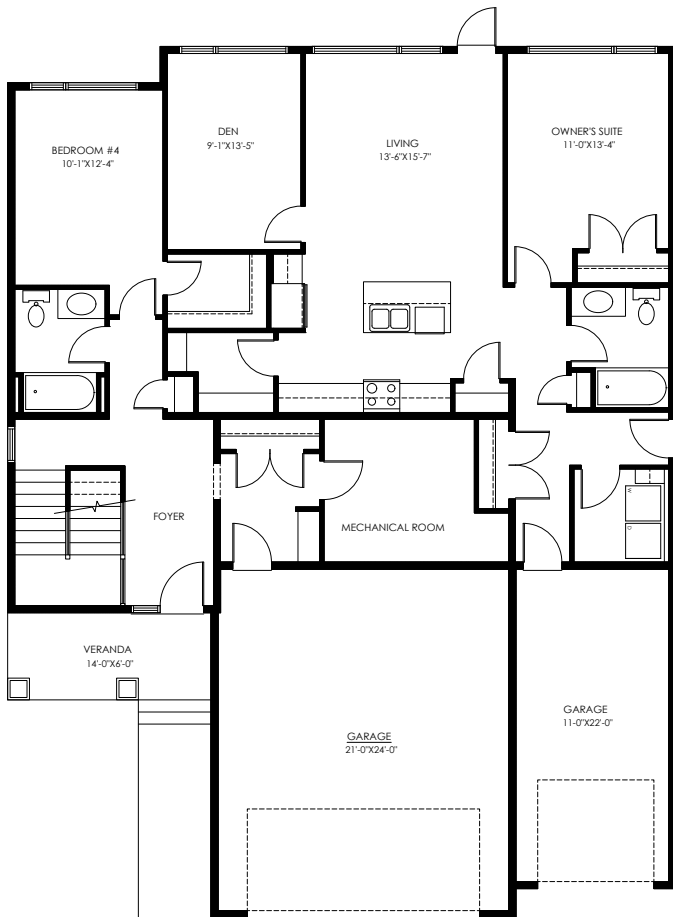


767 DEANS DRIVE

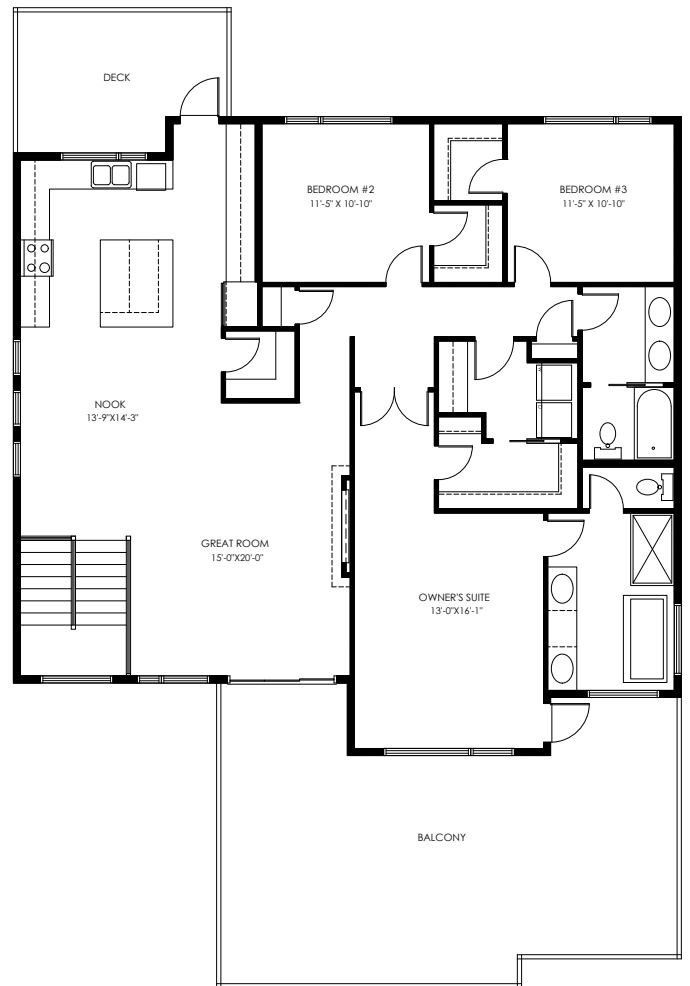
3453 SQFT – 4 BEDROOMS + 1 BEDROOM SUITE

2-storey walk up with Legal Suite • Romantic views of the valley and Okanagan Lake
Three covered Patios to maximize outdoor living • Vaulted ceilings on the main floor
Spacious Owner's Suite includes 5-piece spa Ensuite
967 SQFT legal suite with Bedroom, Den and separate Garage bay



MAIN FLOOR

1674 sqft



UPPER FLOOR

1779 sqft



WWW.BUILDWITHKIMBERLEY.CA
Edmonton's SEVEN TIME Builder of the Year

Questions about this home or building your own? Call/text Lauren: 778.401.7376